

# W LUM

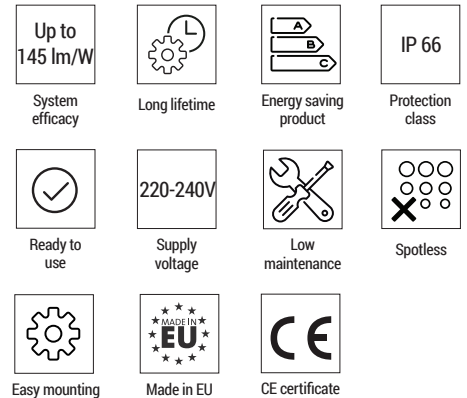


**LUMENIA  
INDUSTRIAL**

With its high grade of protection against dust, contamination and water permeation, W LUM LED light is a perfect solution for illuminating spaces with dusty and humid environments. It offers extremely high lighting efficiency and excellent light uniformity.



	W LUM				
System efficacy	Up to 145 lm/W				
Supply voltage	220-240 VAC				
Power	21 W	23 W	28 W	39 W	47 W
Luminous flux	Up to 2,600 lm	Up to 3,000 lm	Up to 3,900 lm	Up to 5,400 lm	Up to 6,900 lm
Body type	W LUM 1	W LUM 2	W LUM 3	W LUM 2	W LUM 3
Weight	1.17 kg	1.49 kg	1.49 kg	1.49 kg	2.13 kg
Lifetime L70B10	> 50,000 h				
CCT	4,000 K				
CRI	≥ 80				
Photobiological risk	Risk group 0				
Ingress protection	IP 66				
Operating temperature	-20 °C to +35 °C				
Electrical / Appliance class	Class I				
Colour	RAL7035				
Remote control options	DALI (Optional)				
Housing material	GRP Housing, PMMA opal difusor				
Mounting	Pendant or surface mounting				
Warranty	5 years				
Certificates	CE				



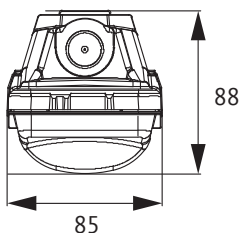
## MAIN FEATURES

High grade of protection IP66  
High system efficacy  
Easy installation

## APPLICATIONS

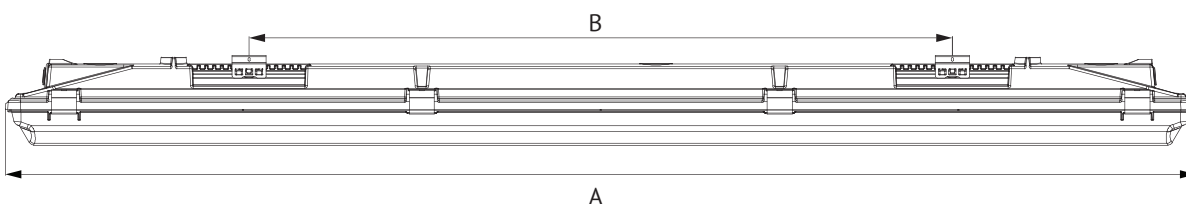
Garages  
Production facilities  
Workshops  
Corridors

## DIMENSIONS

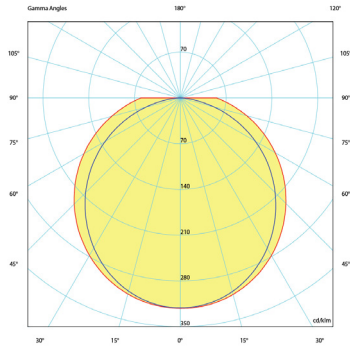


SIZES	W LUM 1	W LUM 2	W LUM 3
A	605	1185	1477
B	238	700	1000
KG	1,17	1,49	2,13

\*All dimensions are in mm.



# OPTIC



Suitable for industrial plants with lower ceilings.

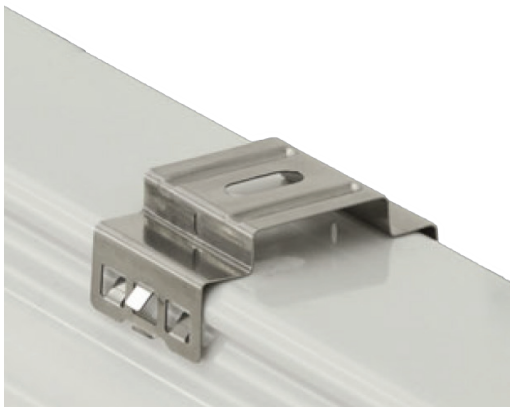
# PRODUCT VARIATIONS

Code	Power [W]	Luminous flux [lm]*	Efficacy [lm/W]	Body type
WLUM 21.600	21	Up to 2,600	Up to 125	W LUM 1
WLUM 23.1200	23	Up to 3,000	Up to 130	W LUM 2
WLUM 28.1500	28	Up to 3,900	Up to 140	W LUM 3
WLUM 39.1200	39	Up to 5,400	Up to 140	W LUM 2
WLUM 47.1500	47	Up to 6,900	Up to 145	W LUM 3

\*Luminous flux is valid for CCT 4000 K

The latest validated data is available at [www.lumenia.com](http://www.lumenia.com).

# W LUM MOUNTING ACCESSORY



Mounting on the wall or ceiling



Pendant mounting

# NOTES
